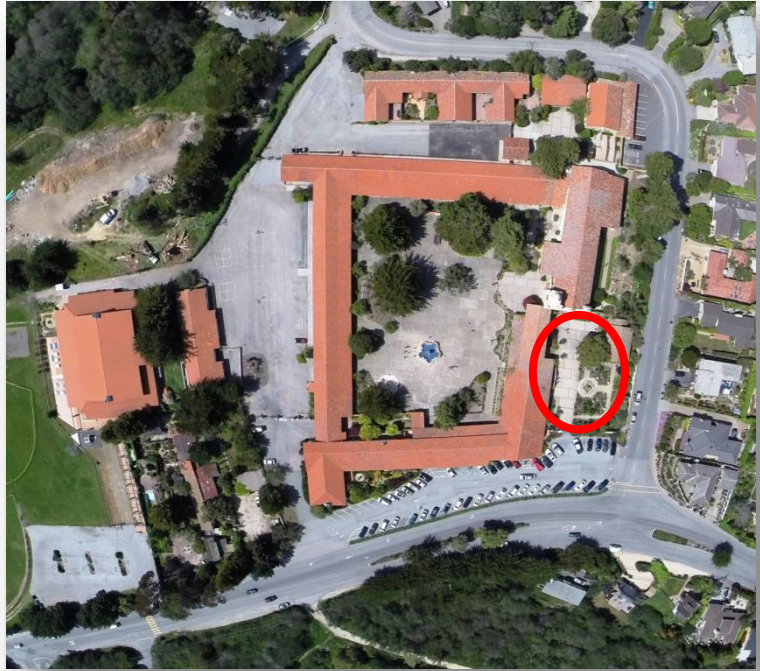


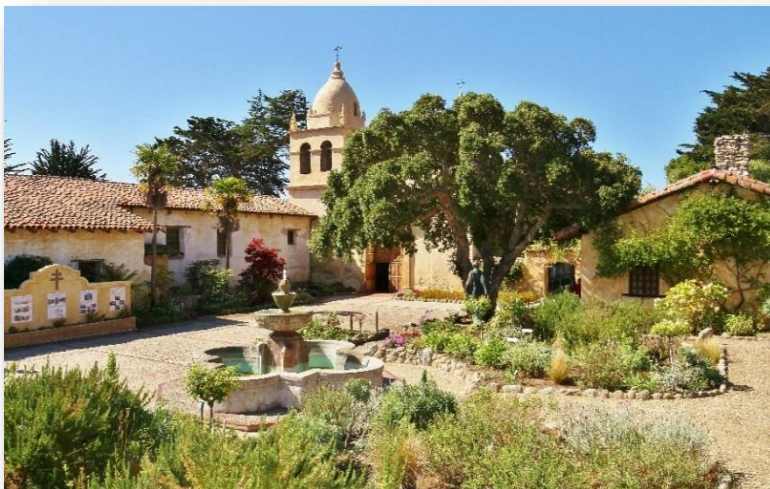
BASILICA FORECOURT

The Basilica Forecourt, covering approximately 6,800 square feet not including the garden area, needs accessibility and drainage upgrades. The Forecourt grading and paving will be completely re-done and drainage improved to provide an accessible, hazard-free walk to the Basilica or museums.

After the original concrete surface of the Forecourt has been removed, and exterior fire lines, utilities, sewer, and drainage have been trenched in, minor grade alterations will be made by bringing in fill to reduce the steepness of the slope from the entrance gate for the purpose of meeting The Americans with Disabilities Act requirements. An accessible step-free ramp will be constructed that will connect the courtyard to the fountain, the gardens, and the Downie Museum, which will be re-designated as the Downie Orientation Center.

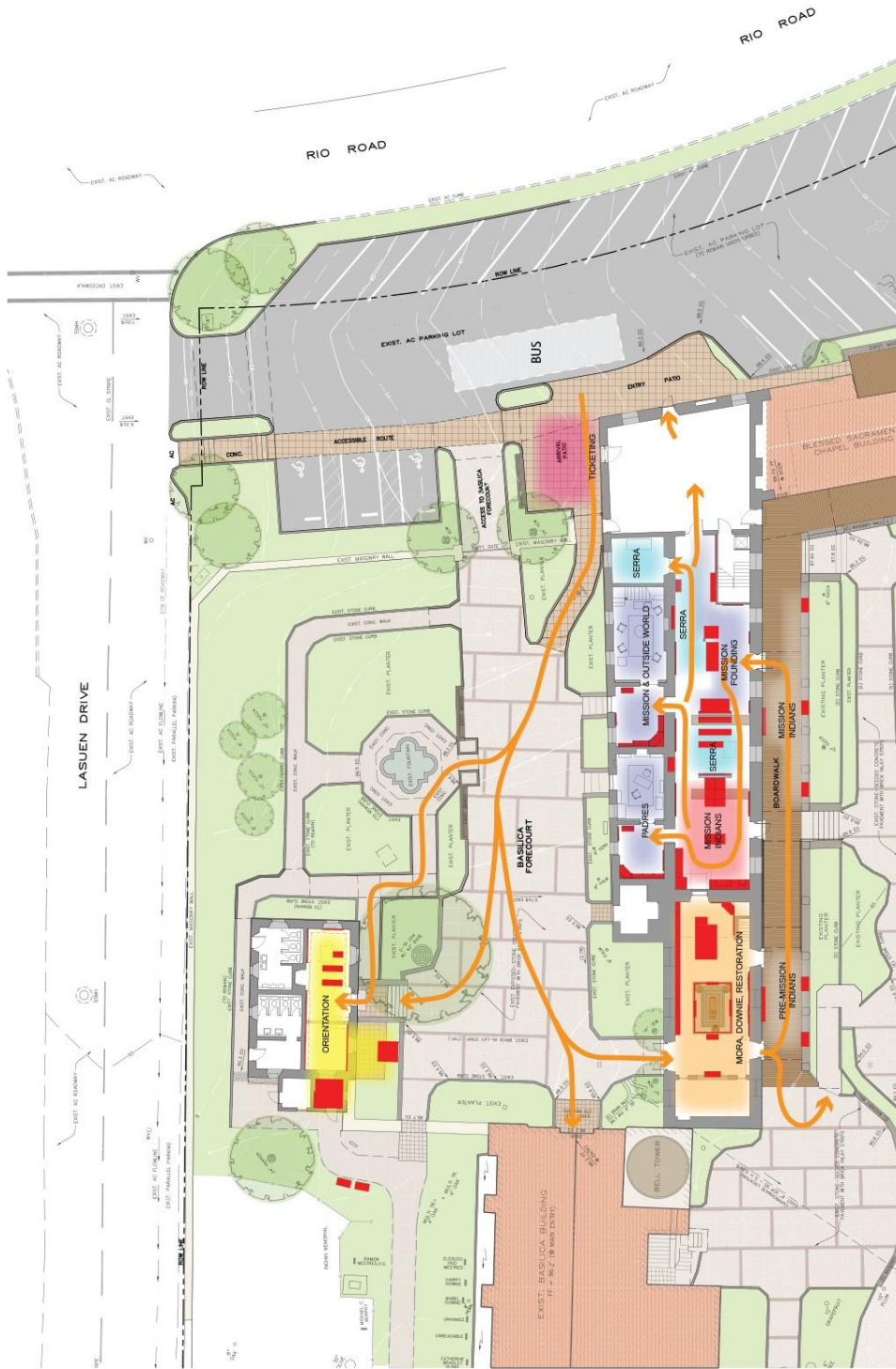


A new drainage system will be constructed near the front entrance to the Basilica and the Mora Chapel Museum to prevent water from flooding into the Basilica during heavy rains, as happened in December of 2012.



Basilica Forecourt

The entire surface of the Basilica Forecourt will be replaced with a new concrete/river stone surface with brick borders to resemble the look it has today. The Forecourt will then be landscaped.



	P.O. Box 597 Agoura, CA 91301 (818) 662-8800		ARCHITECTURAL RESOURCES GROUP, INC. Architecture, Planning, Exhibition Design 6000 Center Drive • Chantler, CA 94011 • 916.520.8811	DANIEL QUAN DESIGN Architecture, Planning, Exhibition Design 6000 Center Drive • Chantler, CA 94011 • 916.520.8811	SITE PLAN SHOWING PATH OF TRAVEL	CARMEL MISSION PHASE 2 MASTER PLAN	SHEET NO. 3 OF SHEETS
	DATE: 6-26-14 SCALE: 1"=10'						